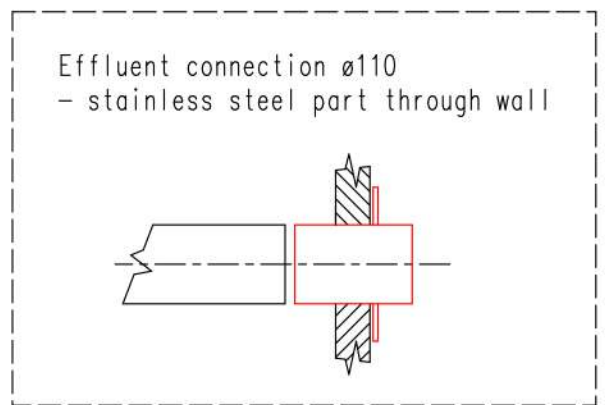
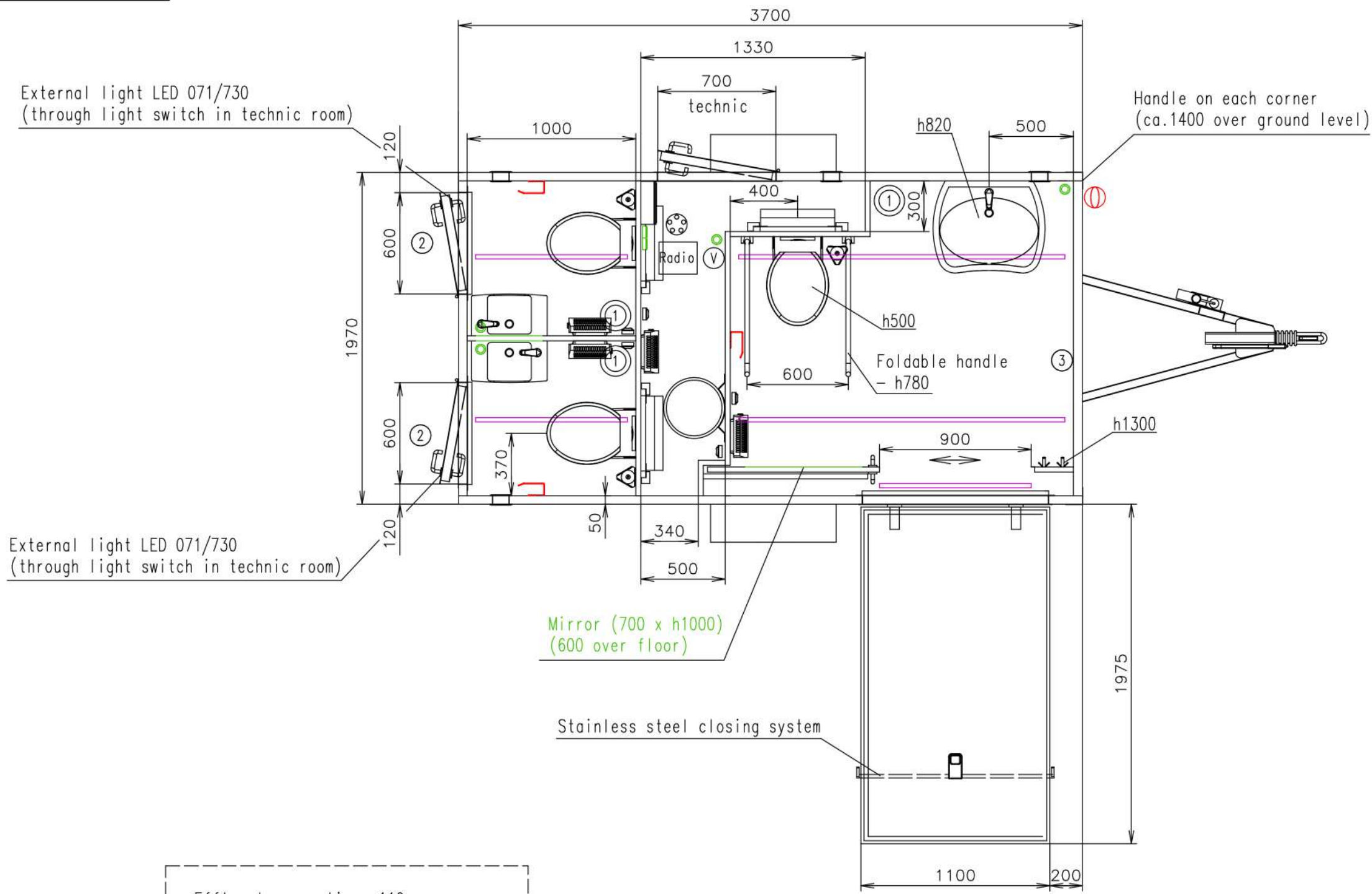


Connection hoses and cables	
Water hose:	✓
Waste water hose:	✗
Electric cable:	✓



(Cabling and piping is not shown on the 3D views and drawings)

Chassis - hydraulic axles Without COC

Notes: External doors - without cylinders Spare wheel - free loaded

Interior height:	2100 mm	Total weight:	1500 kg
Color:	RAL 7042	Tare weight-estimate:	-
Floor:	PVC Jupiter 148708	Centre of wheels from rear side:	-
Date:	31.10.2019	Wheels:	195/50 R13C



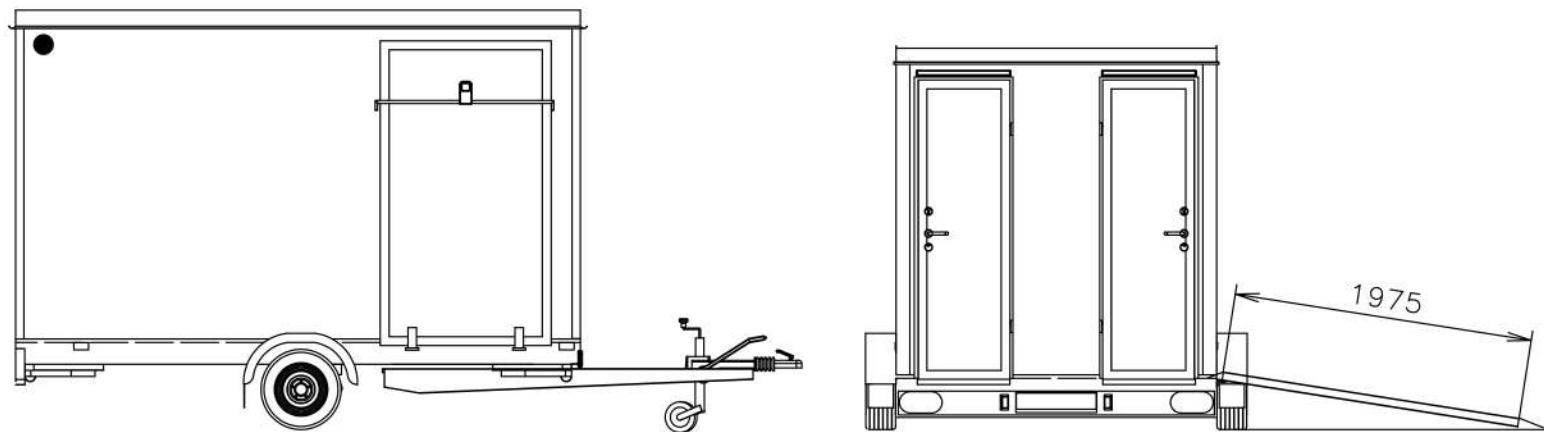
Drawing number: (2289-42)  
3421-37-sketch 2\_1/2 (Sprenger)

Connection hoses and cables	
Water hose:	✓
Waste water hose:	✗
Electric cable:	✓



- Ⓧ Water connection 3/4" (through the floor) + filter + reduction valve
- Ⓞ Electric connection (through the floor) (230V-16A)
- Ⓢ Effluent connection ø110 (through wall) - stainless steel part
- Ⓛ Power point
- Ⓜ Light switch
- Ⓜ Switch board (1200 over floor)
- LED stripe
- Ⓜ Heating (500W)
- Ⓞ Floor drain hole

- Ⓜ Wash-basin Kolo (650x560)(68465)(for disabled) + standart water tap
- Ⓜ Wash-basin Kolo (450x250) + standard water tap
- Ⓜ Hanging toilet (toilet seat - steel holders)
- Ⓜ Hot water boiler Slim (50 l)
- Ⓜ Brush toilet
- Ⓜ Special toilet paper holder
- Ⓜ Clothes hanger
- Mirror (600x600) + black frame around
- ① Speaker
- ② Foldable stairs Serena (one foldable step)
- ③ Foldable changing table for baby



(Cabling and piping is not shown on the 3D views and drawings)

Chassis - hydraulic axles Without COC

Notes: External doors - without cylinders Spare wheel - free loaded

Interior height:	2100 mm	Total weight:	1500 kg
Color:	RAL 7042	Tare weight-estimate:	-
Floor:	PVC Jupiter 148708	Centre of wheels from rear side:	-
Date:	31.10.2019	Wheels:	195/50 R13C



Drawing number: (2289-42)  
3421-37-sketch 2\_2/2 (Sprenger)